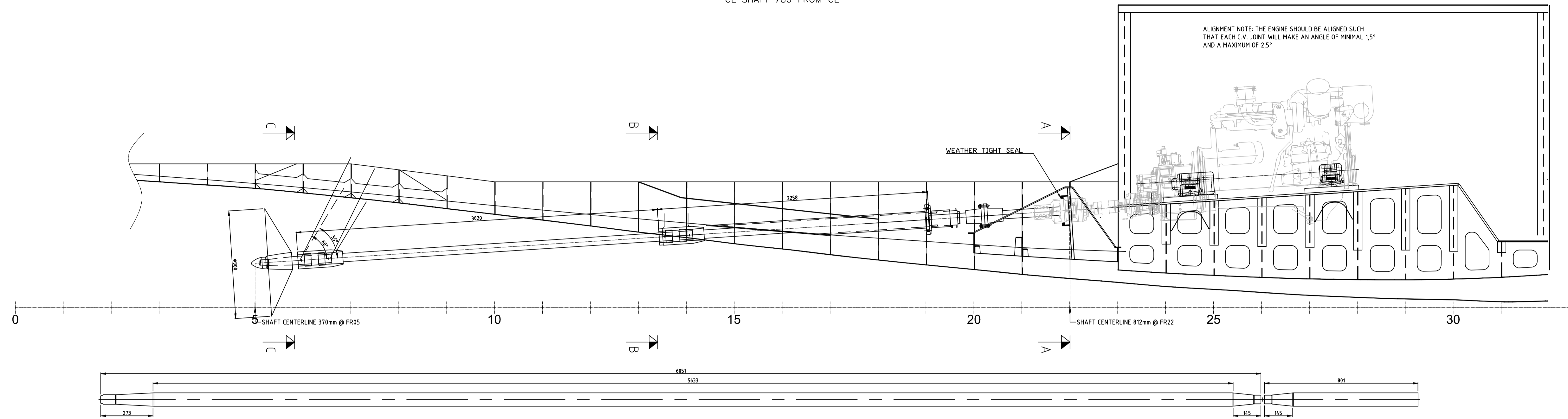


# LONGITUDINAL SECTION

SCALE 1:20  
CL SHAFT 780 FROM CL



PROPELLER  
BLADES: 4  
DIAMETER: 0.90 M  
ROTATION: OUTBOARD OVER TOP

SHAFT  
MATERIAL: ST. ST. 316L  
DIAMETER: 70 MM

SHAFT SEAL  
MAKE: TIDES MARINE  
TYPE: SURE SEAL

FLEXIBLE COUPLING  
MAKE: AQUA DRIVE  
TYPE: CV42-HDL680  
MAX TORQUE: 10500 NM

GEARBOX  
MAKE: TWIN DISC  
TYPE: MG 5091SC  
GEAR RATIO: 2.45:1

MAIN ENGINE  
MAKE: MAN  
TYPE: D2866LXE40  
POWER: 250kW @ 1800 rpm

PROPELLER BOSS  
SCALE 1:5

V-STRUT  
SCALE 1:5

I-STRUT  
SCALE 1:5

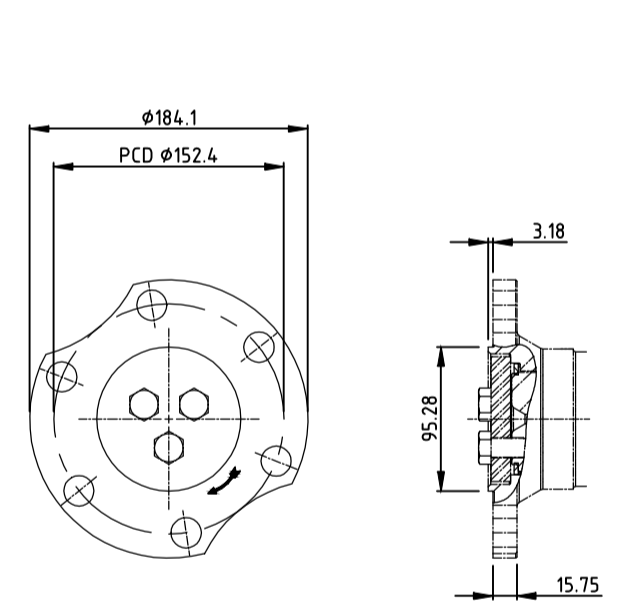
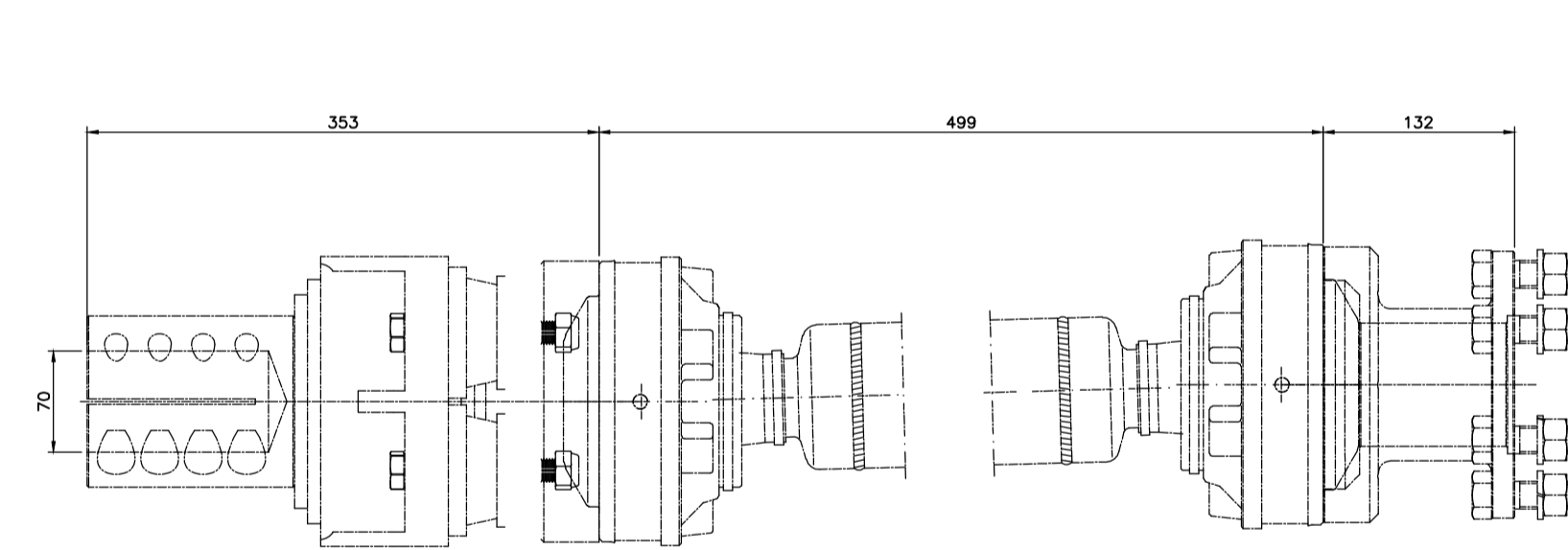
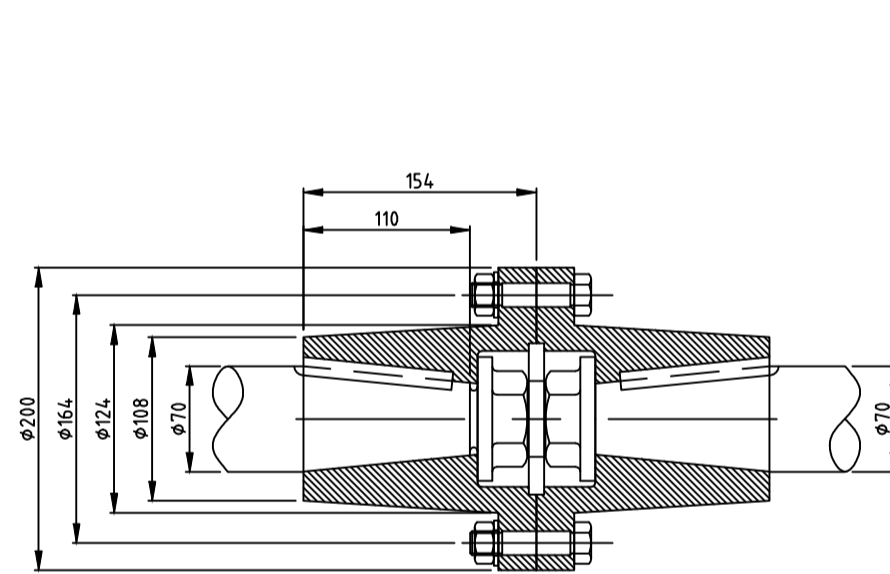
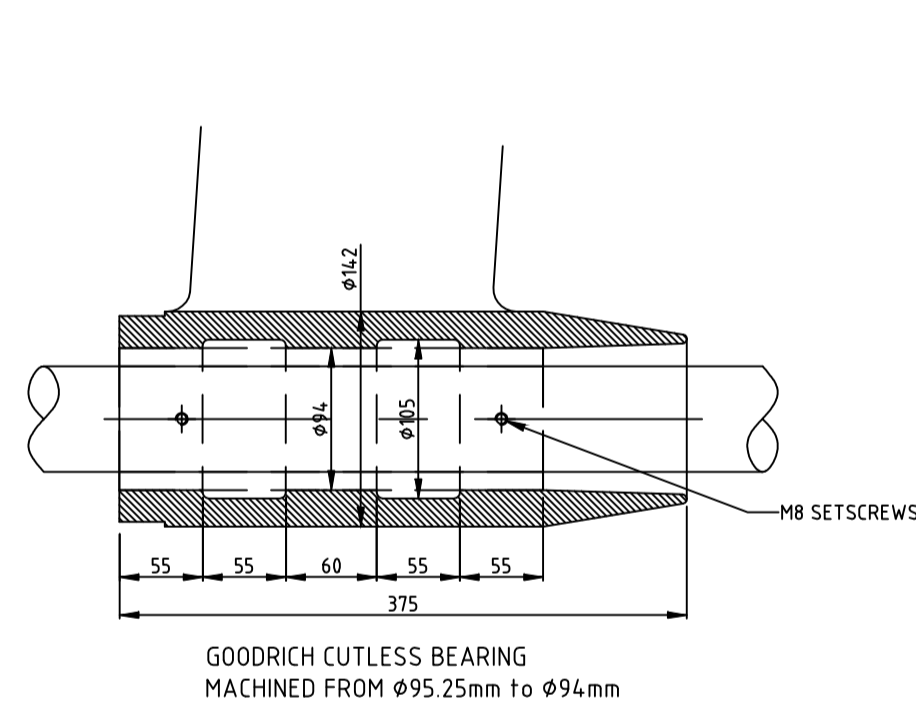
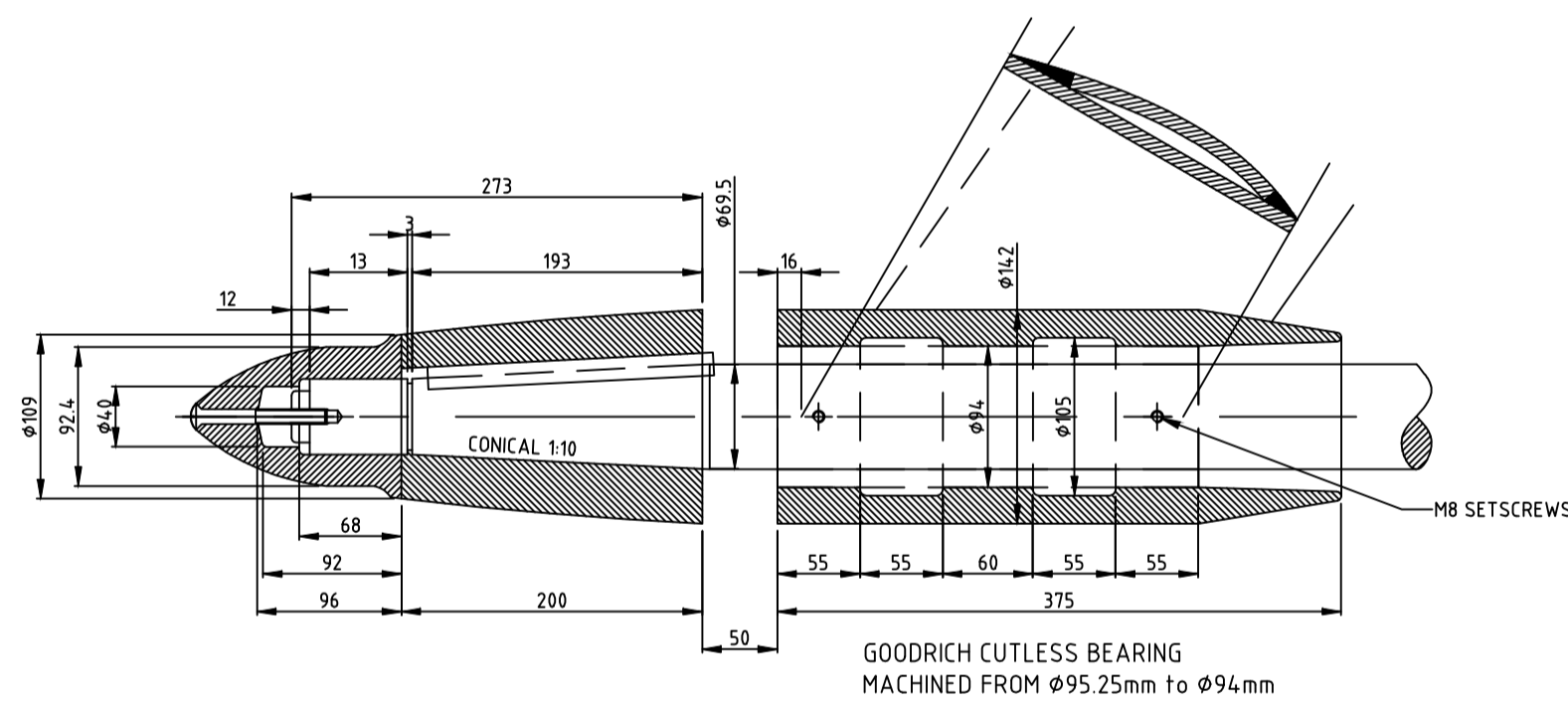
SHAFT COUPLING  
SCALE 1:5

THRUST BEARING  
SCALE 1:5

CV-SHAFT  
SCALE 1:5

SPOOL ADAPTER  
SCALE 1:5

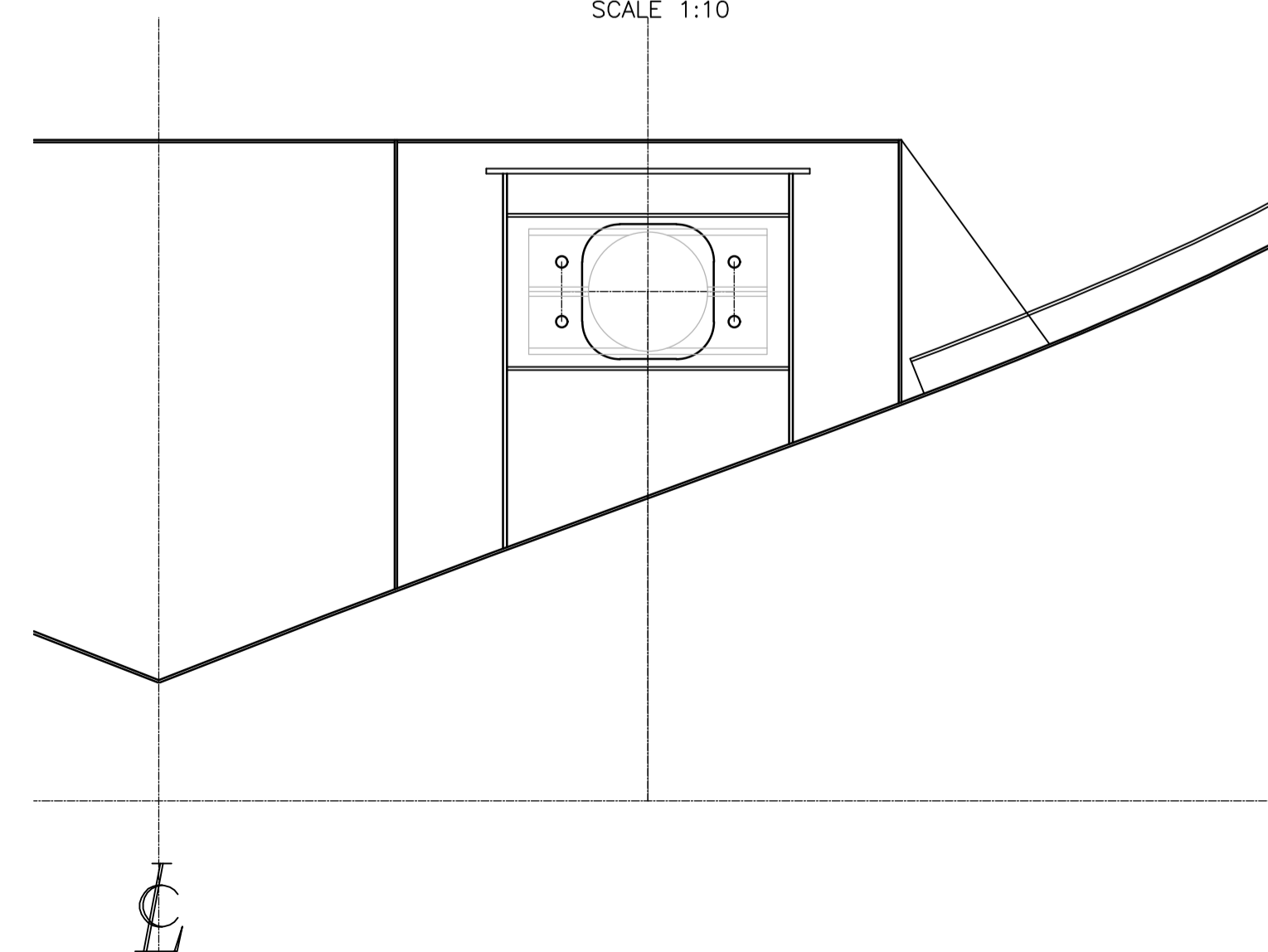
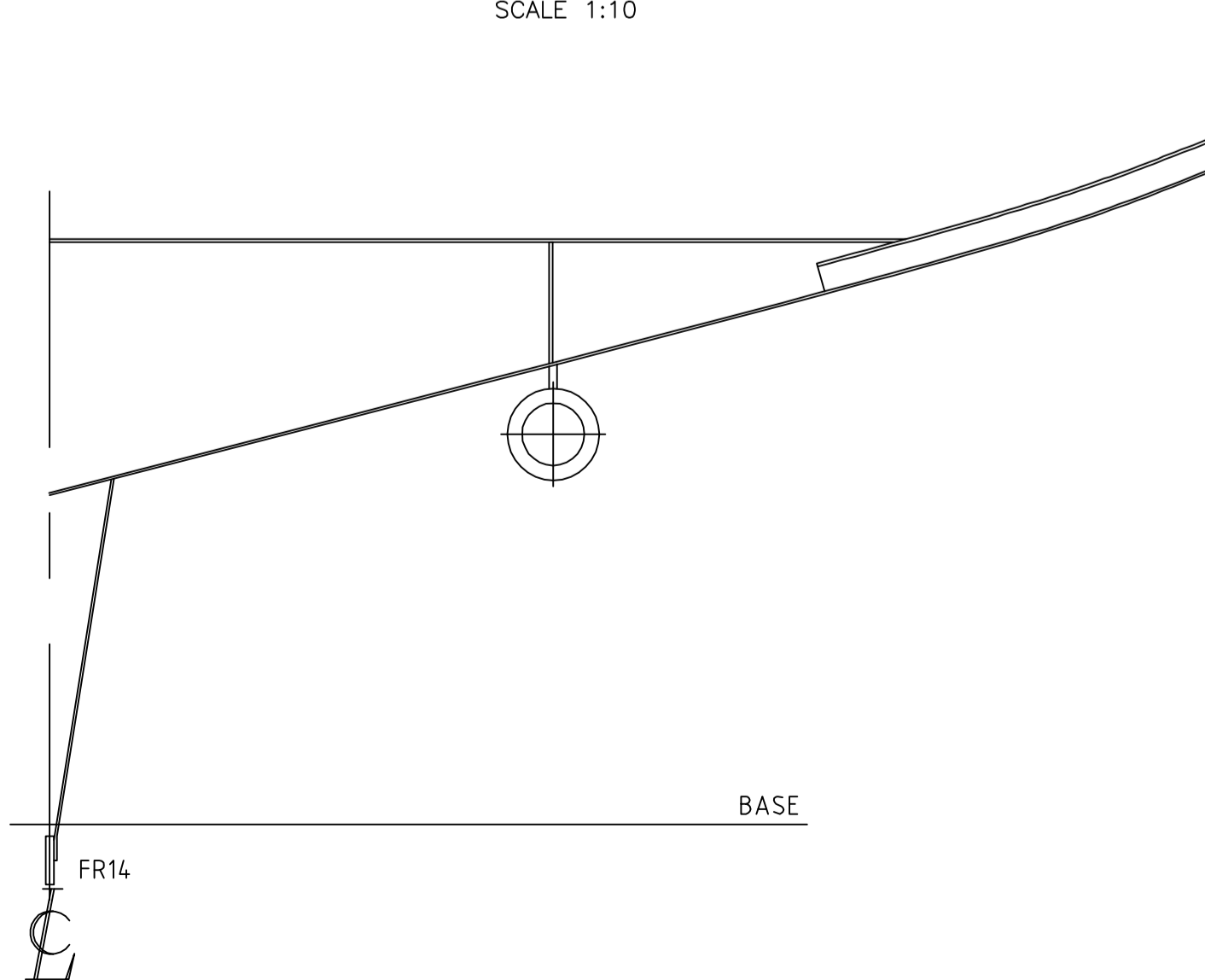
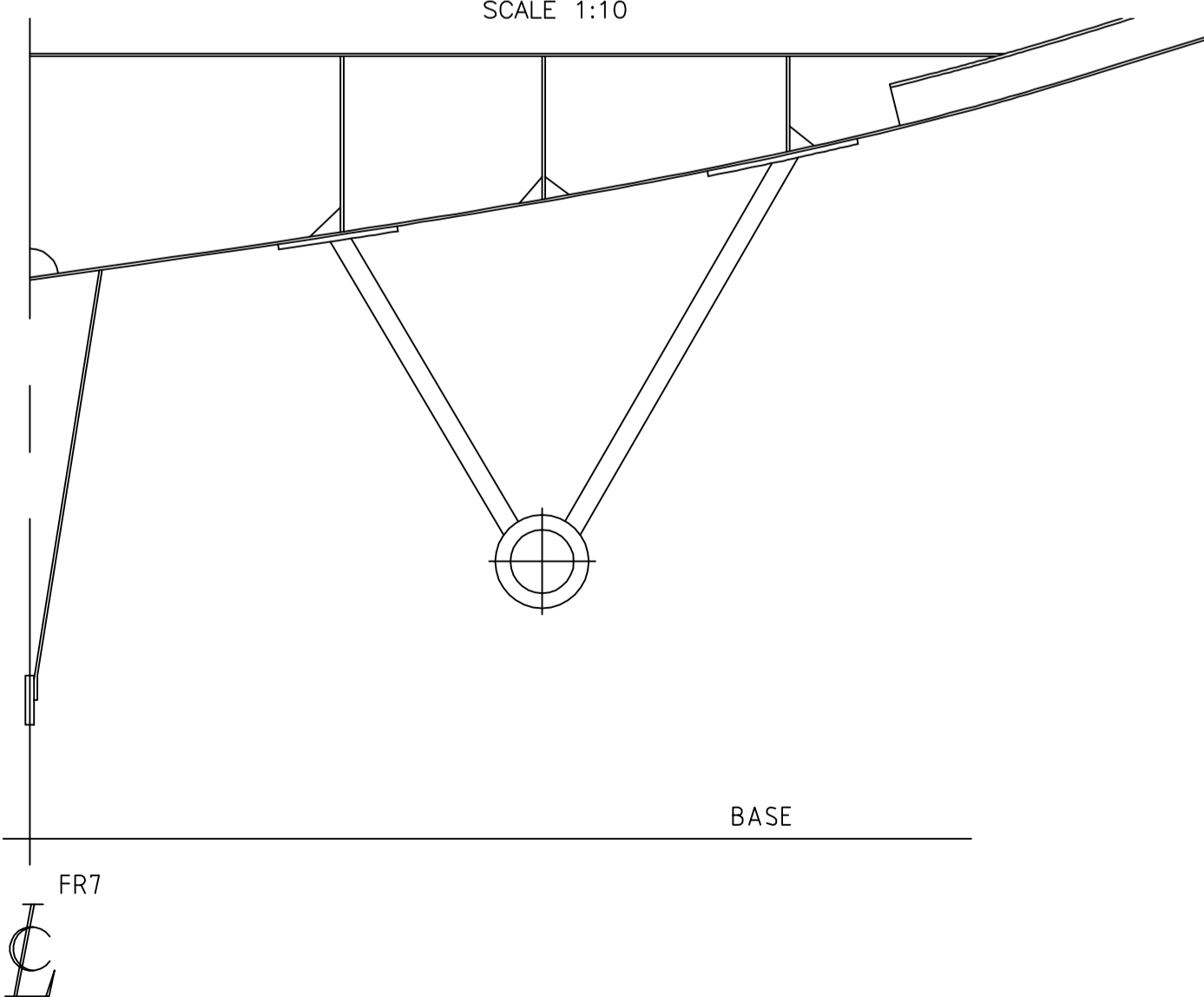
GEARBOX FLANGE  
SCALE 1:5



SECTION C-C  
SCALE 1:10

SECTION B-B  
SCALE 1:10

SECTION A-A  
SCALE 1:10



### NOTES:

1. PS DRAWN, SB MIRROR IMAGE

Status	Revision	Description	Drawn
IS	A	28-03-2018 ORIGINAL ISSUE	JS

FOR APPROVAL	<b>FEADSHIP</b> Royal Dutch Shipyards		<b>de vries makkum</b>		Scale: 1:2.5, 1:20 Drawn: 17/19 Title: 586	
	<b>DE VOOGT</b> MARINE ARCHITECTEN		Project: JEROENS Date: 28-03-2018 Scale: A3		Sequence No: 000 Sheet No: 00 Total Sheets: 00	
	Title: <b>SHAFT LINE ARRANGEMENT</b> Subtitle: <b>SB_FORWARD</b>		Scale: 1:2.5, 1:20 Drawn: 17/19 Title: 586		Sequence No: 000 Sheet No: 00 Total Sheets: 01	
	Project: <b>BASELINE</b> Date: 28-03-2018 Scale: A3		Scale: 1:2.5, 1:20 Drawn: 17/19 Title: 586		Sequence No: 000 Sheet No: 00 Total Sheets: 01	