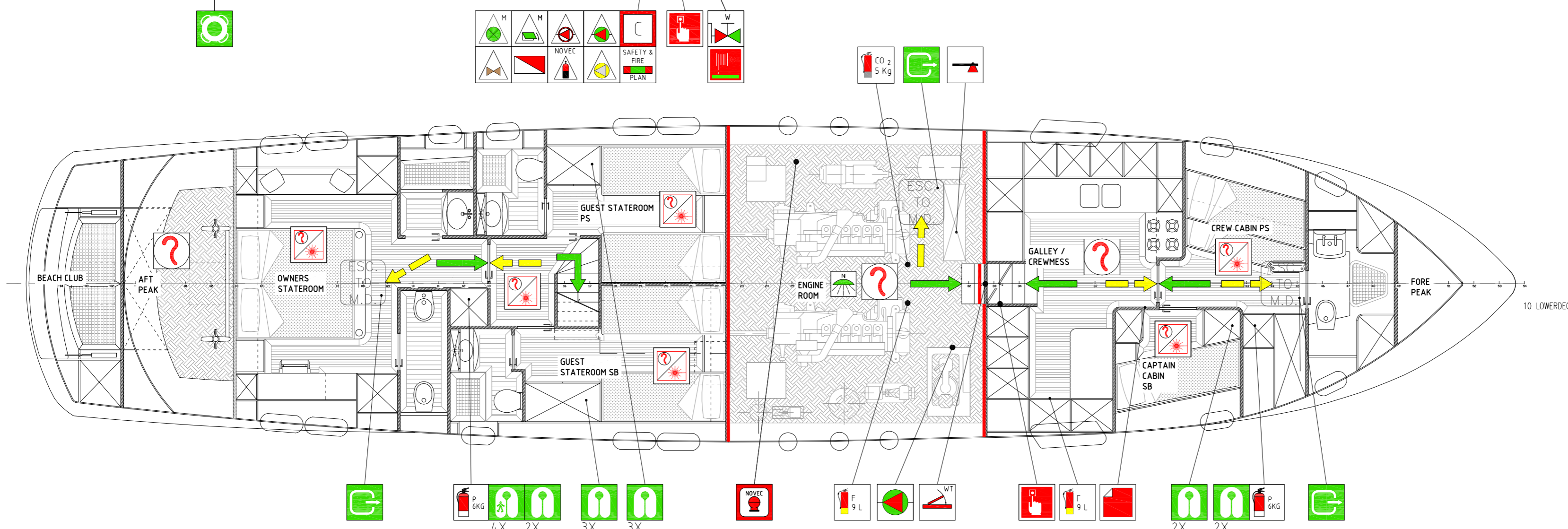
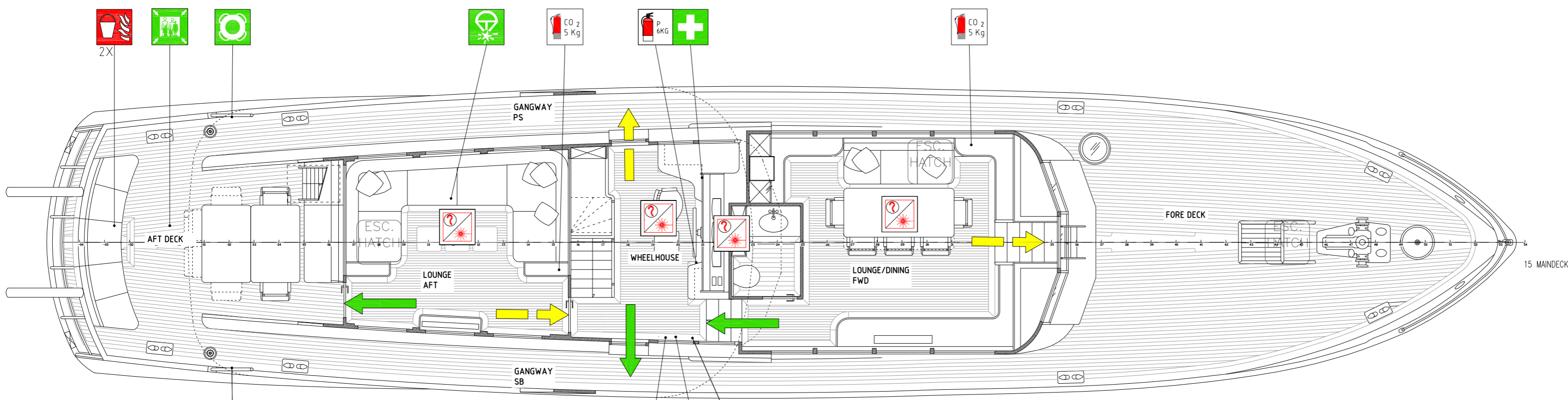
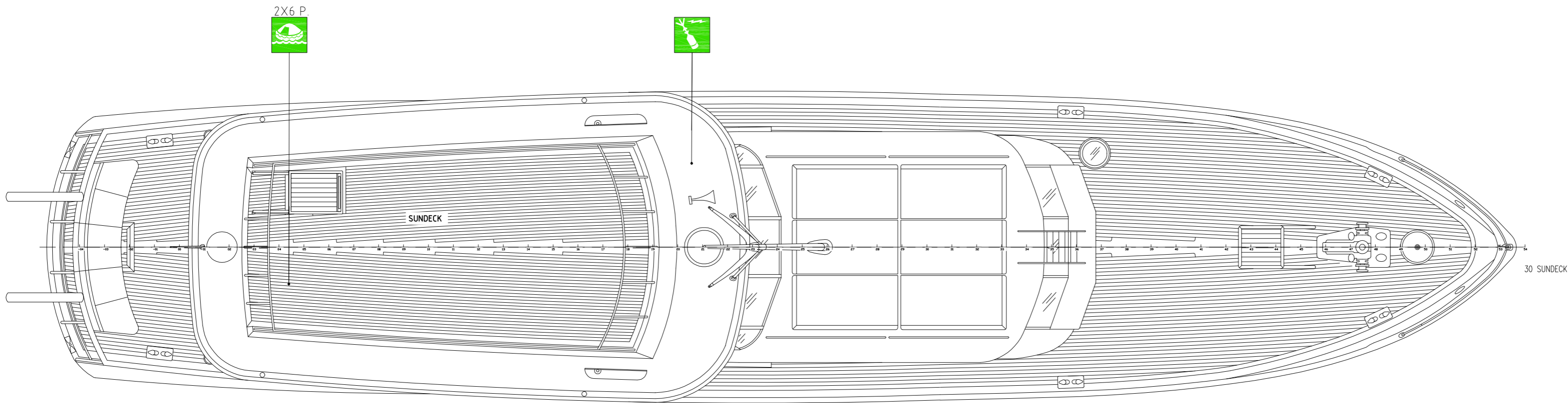
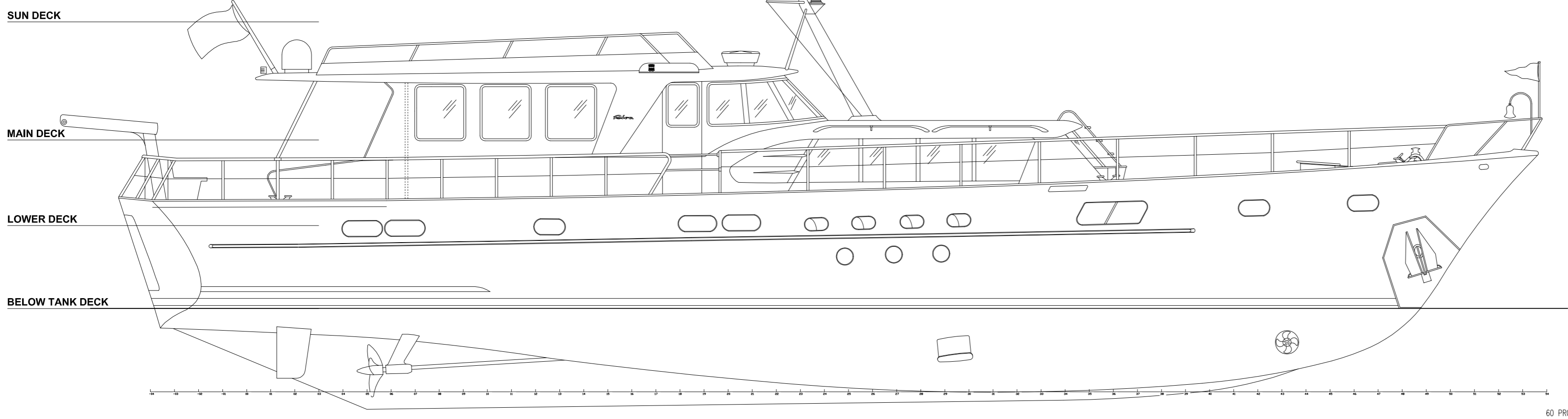
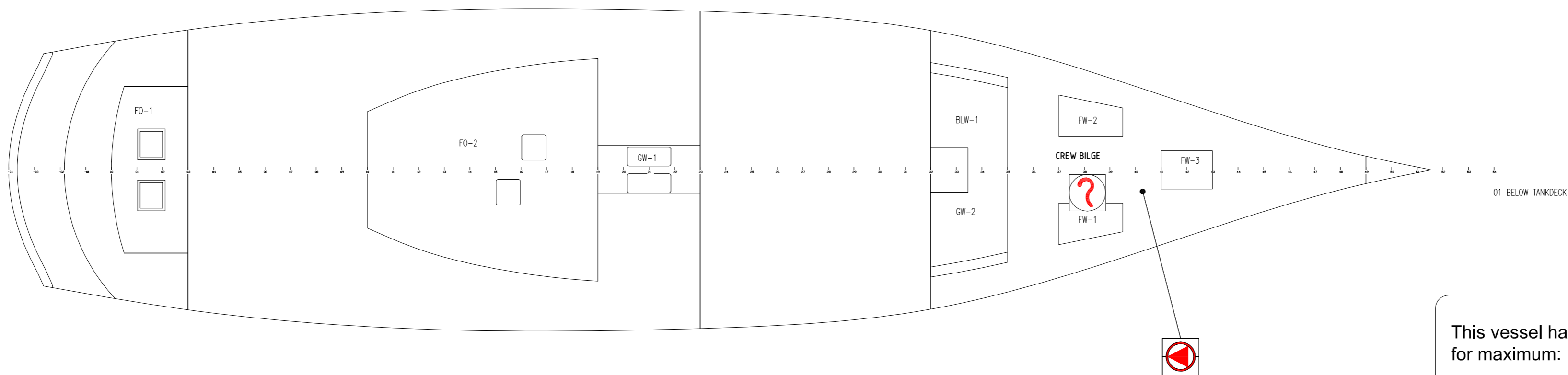


# LIFESAVING - AND FIRE CONTROL PLAN

- The GENERAL ALARM SIGNAL is a distinctive sound that can be heard throughout the vessel. There are two different alarm signals aboard for the GENERAL EMERGENCIES as indicated below.
- FIRE ALARM : continuous sounding of the ALARM tone
- GENERAL EMERGENCY ALARM : seven short blasts followed by a long blast of the ALARM tone and/or horn (continuing). Guest and Crew: take life jacket and proceed to the muster station as directed.
- ABANDON SHIP is a verbal order given by the Master only.



QUANTITIES				LIST OF SYMBOLS DESCRIPTION
BELOW TANK DECK	LOWER DECK	MAIN DECK	SUN DECK	
TOTAL NUMBER				
DISPLAY				
2	1	3		Safety plan for fire control - LSA
ALARM SIGNALS - COMMUNICATION				
1	1	2		Fire alarm break glass
1	1	1		Fire alarm panel
1	3	4		Area with smoke detector
6	4	10		Area with VESDA smoke detection
FIXED FIRE FIGHTING SYSTEMS				
1	1	1		NOVEC Bottle
1	1	1		Area protected by NOVEC
PUMPS - HYDRANTS - HOSES - VALVES				
1	1	1		Bilge / firefighting pump
1	1	1		Emergency firefighting pump
1	1	1		Fire hydrant seawater
1	1	1		Fire hose 14.3m
PORTABLE FIRE FIGHTING EQUIPMENT				
2	1	2		Fire extinguisher foam (ABS) 9Ltr
2	1	3		Fire extinguisher powder 6KG
1	2	3		Fire extinguisher CO2 5KG
1	1	1		Fire blanket
2	2	2		Fire bucket with lanyard
2	2	2		Fire axe
CONTROLS				
1	1	1		Control station
1	1	1		Novec activation panel
1	1	1		Ventilation remote shutoff machinery
1	1	1		Quick closing for fuel
1	1	1		Ventilation closing appliance machinery
1	1	1		Remote control emergency Fifi pump
1	1	1		Remote control bilge- Fifi pump
1	1	1		Remote shutoff fuel pump(s)
COMPARTMENTS - DOORS - EXITS				
1	1	1		Hinged WT-door
-	-	-		Primary means of escape
-	-	-		Secondary means of escape
3	3	3		Emergency exit
LIFE SAVING - FIRST AID EQUIPMENT				
1	1	1		Muster station
1	1	1		Parachute rockets
1	1	1		EPIRB
12	12	12		Life jacket
4	4	4		Life jacket child
2	2	2		Life buoy
2	2	2		Life raft (6 Persons)
1	1	1		Medical locker
SYMBOL DESCRIPTION				
— A class bulkheads				
→ Primary means of escape				
→ Secondary means of escape				



This vessel has been equipped with lifesaving equipment for maximum:  
 3 Crew  
 9 Passengers (children included)

Status	Revision	Description	Drawn
E			
D			
C	28-11-2018	UPDATE AS BUILT	OJGD
B	18-06-2018	UPDATE AFTER RINA COMMENTS (FIRE APPLIANCES AND ESCAPE ROUTES ONLY)	OJGD
A	03-04-2018	FIRST SETUP	OJGD

<b>FEADSHIP</b> ROYAL DUTCH SHIPYARDS		<b>DE VRIES</b> CONSTRUCTIE	
Project No: 40541	Drawings: 20	Revisions: 95	Scale: 95
Drawn: 03-04-2018	Scale: A1	Sheet No: 0740	Drawn: 586
Project: 01541445700	Contract: 01515445700	Drawn: 001	Scale: 01
Project: 01541445700	Contract: 01515445700	Drawn: 001	Scale: 01