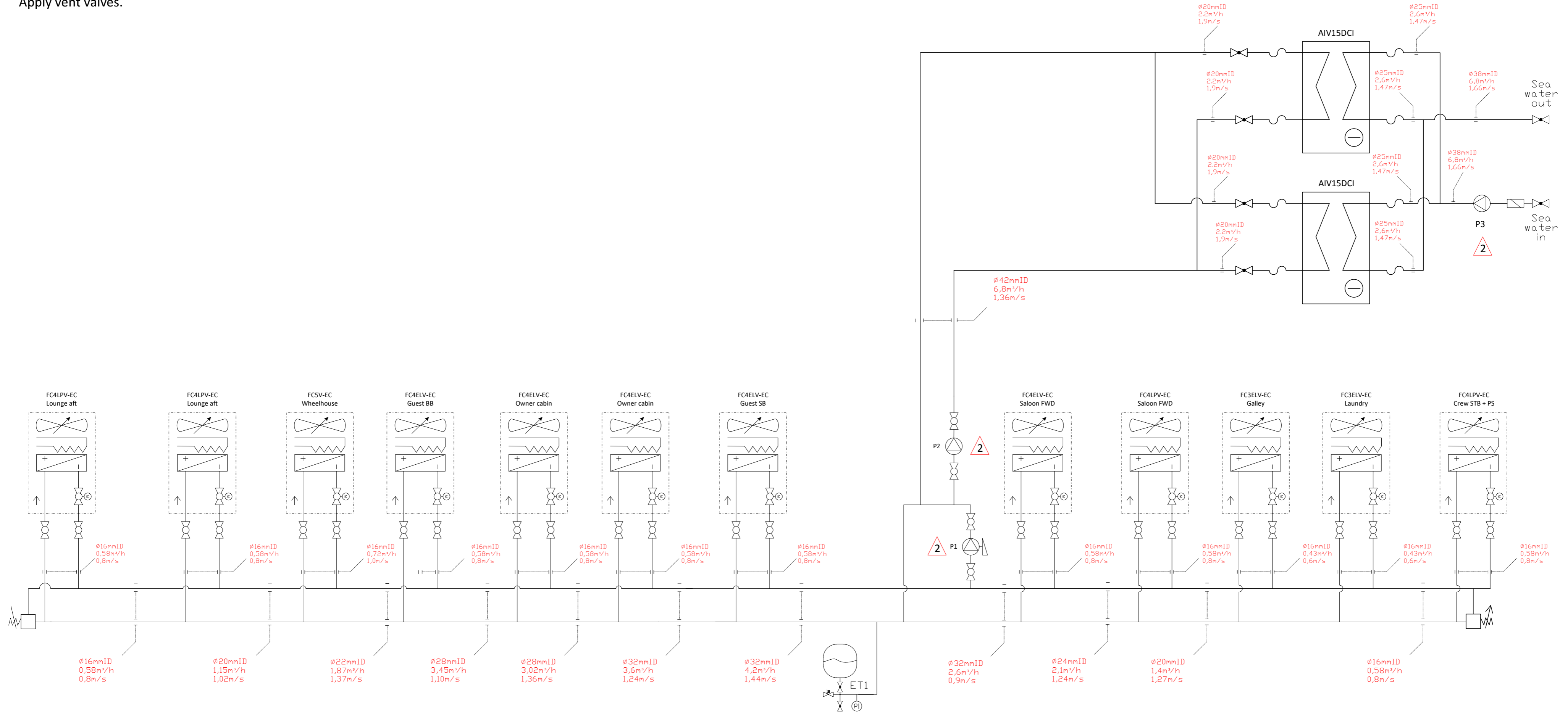



IMPORTANT

All sizes are internal dimensions.
 Resize to a bigger dimension is acceptable, smaller not.
 Make sure that valves, fittings and connection material have the same internal diameter as the required piping.
 Various pipe materials may be used when it is suited for temperatures between 5 and 50°C.
 Pipe material should be resistance against a glycol mixture.
 Apply vent valves.



 NAUTIC & INDUSTRIAL ENGINEERING +31(0)321 33 74 67 www.mave.nl info@mave.nl	TITLE		PROJECT	
	Detailed fluid diagram		Caravelle	
	DATE	REV. DATE	CUSTOMER	REV.
	24-04-2018	19-09-2018	De Vries Makkum	2
	DRAWN	CHECKED	DRAWING NR.	PROJECT NR.
MvH	-	-	FORMAT	
			A3	
This drawing is our property and is confidential. Do not copy without our permission.				